

# Temple Report Suite

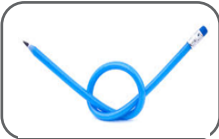
*A comprehensive suite of reports that provide a holistic understanding of category performance and key drivers*

## Key Benefits



### **Quick Understanding to Category Performance**

- ✓ Immediate access to a suite of pre-formatted category review reports
- ✓ Added ability to customize report development against specific business needs
- ✓ Holistic reporting view incorporating scanning and shopper insight trends



### **Report Creation Flexibility**

- ✓ Customize markets, products, and timeframes
- ✓ Define additional product attributes
- ✓ Includes filters for manufacturer, brand and promotional clusters
- ✓ Select from an array of POS and shopper panel metrics



### **Report Automation**

- ✓ Intelligent Temple software linked with MS Excel or PowerPoint allows for easily refreshable custom reports



### **Macro vs. Micro**

- ✓ Multi level analysis available and customizable
- ✓ View top-line category, timeframe, market - or drill down to item, week, and store level data



### **Multiple Data Sources**

- ✓ Integration of data from multiple sources including: retailer POS, internal shipment, financial, and market level



### **Client Service Support**

- ✓ Initial set up and functionality training
- ✓ Expert advice on report creation best practices

*Spend less time retrieving data and more time analyzing and providing **INSIGHTS***

# Temple Report Suite

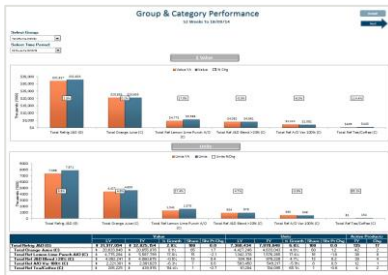
## What is included?

- Weekly delivery of database containing 3 years of history accessed by secure FTP server
- Item, store and week level sales data aligned to flyer, products aligned to retailer's defined hierarchy
- On-going support from Aztec's Client Service Team
- A comprehensive, refreshable Scorecard report and up to 3 additional reports customized to your business needs

## Scorecard Reports

The Scorecard reports allow users to assess top-line category, manufacturer, brand, item and store performance, in an easily refreshable comprehensive report.

### Category Performance



View sales metrics at the Category, manufacturer and brand level at any of five timeframe options.

### Item Ranking Performance

View performance by item within a selected category at select timeframe.

### Store Ranking Performance

View store level performance within a Category at a select timeframe.

## Want to know more?

Contact your Aztec Account Manager

OR

**Dave Mann**

Managing Director

- (416) 569-4085
- [dave.mann@azteccanada.com](mailto:dave.mann@azteccanada.com)

**Cheryl Ong Seng**

Director – Client Service

- (403) 470-4847
- [cheryl.ongseng@azteccanada.com](mailto:cheryl.ongseng@azteccanada.com)